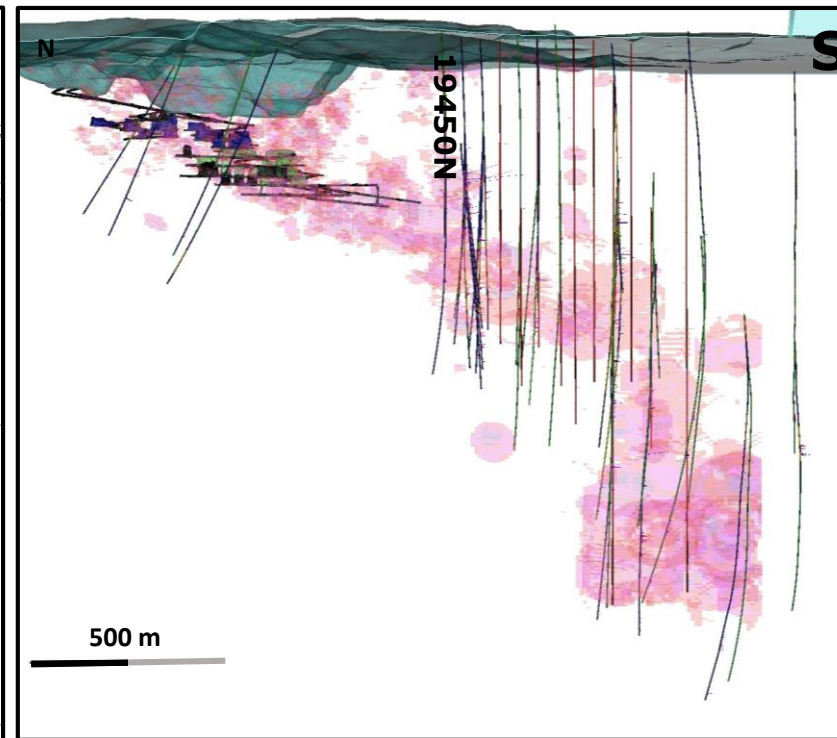
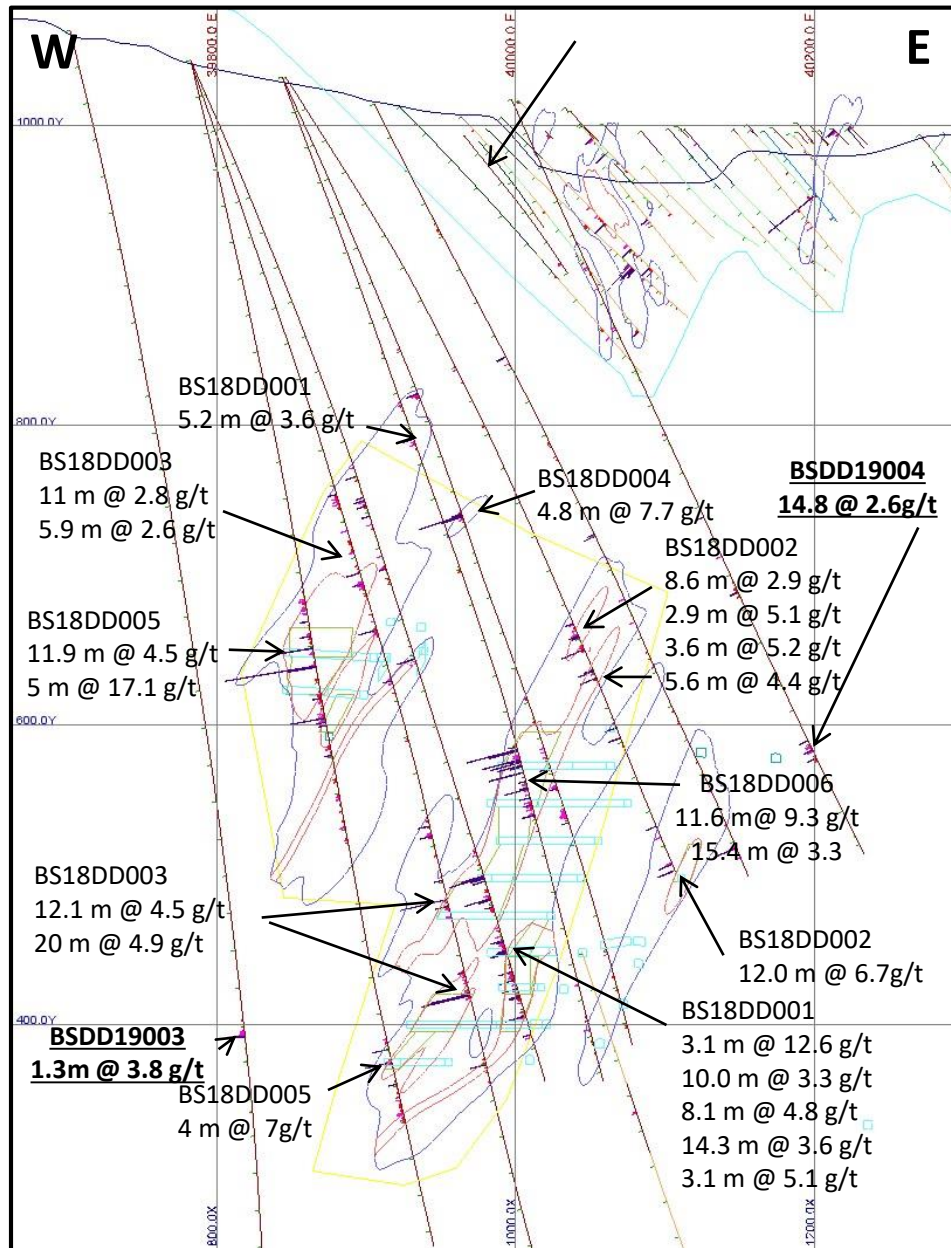
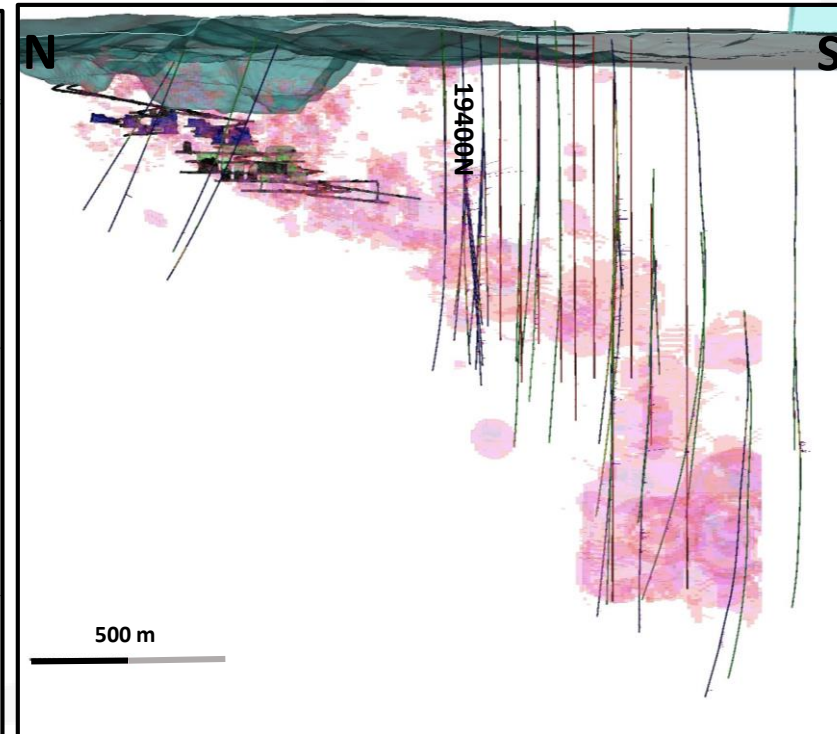
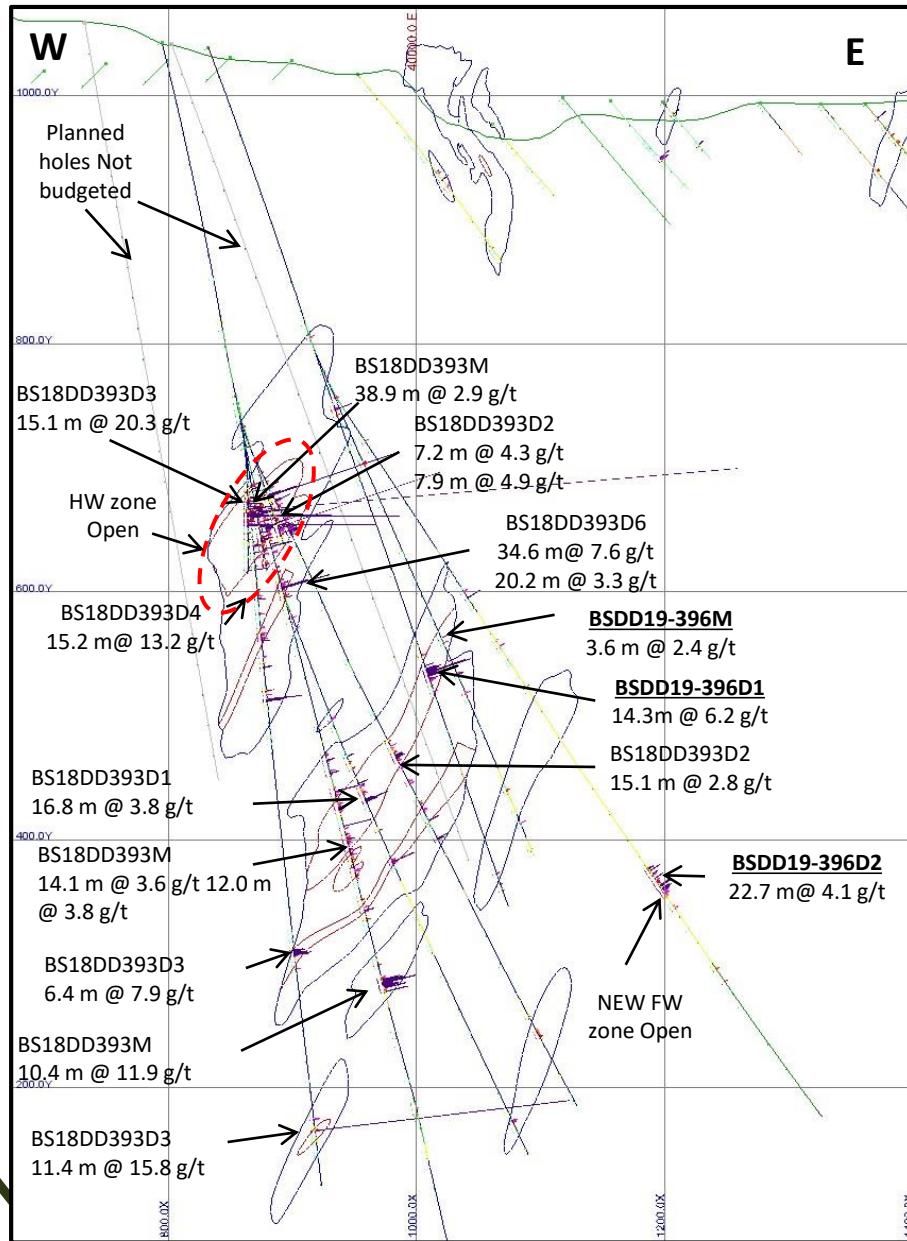


B SHOOT SOUTH DRILLING: 19450 N INFERRED TO INDICATED CONVERSION DRILLING



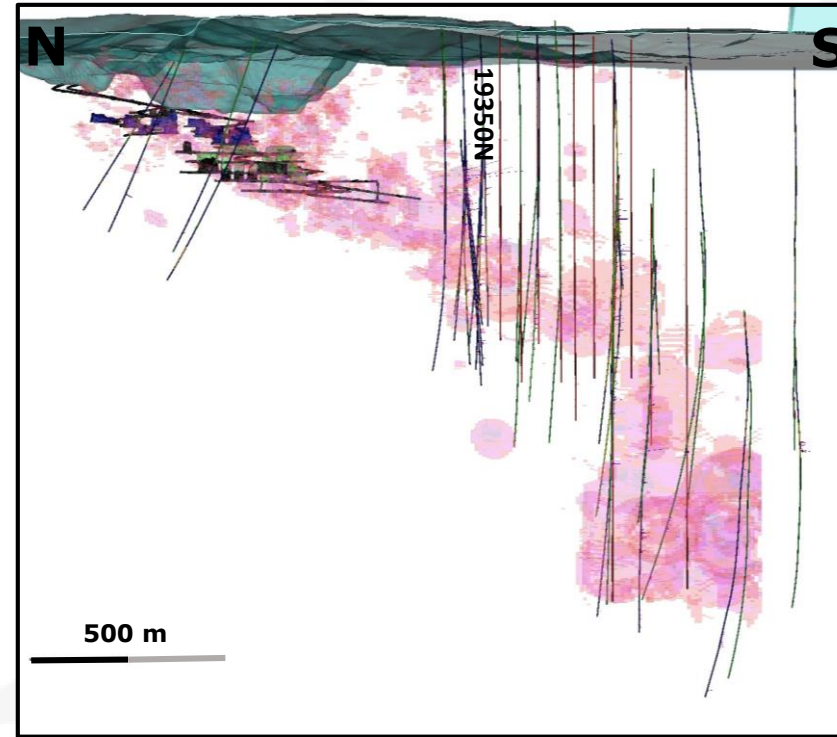
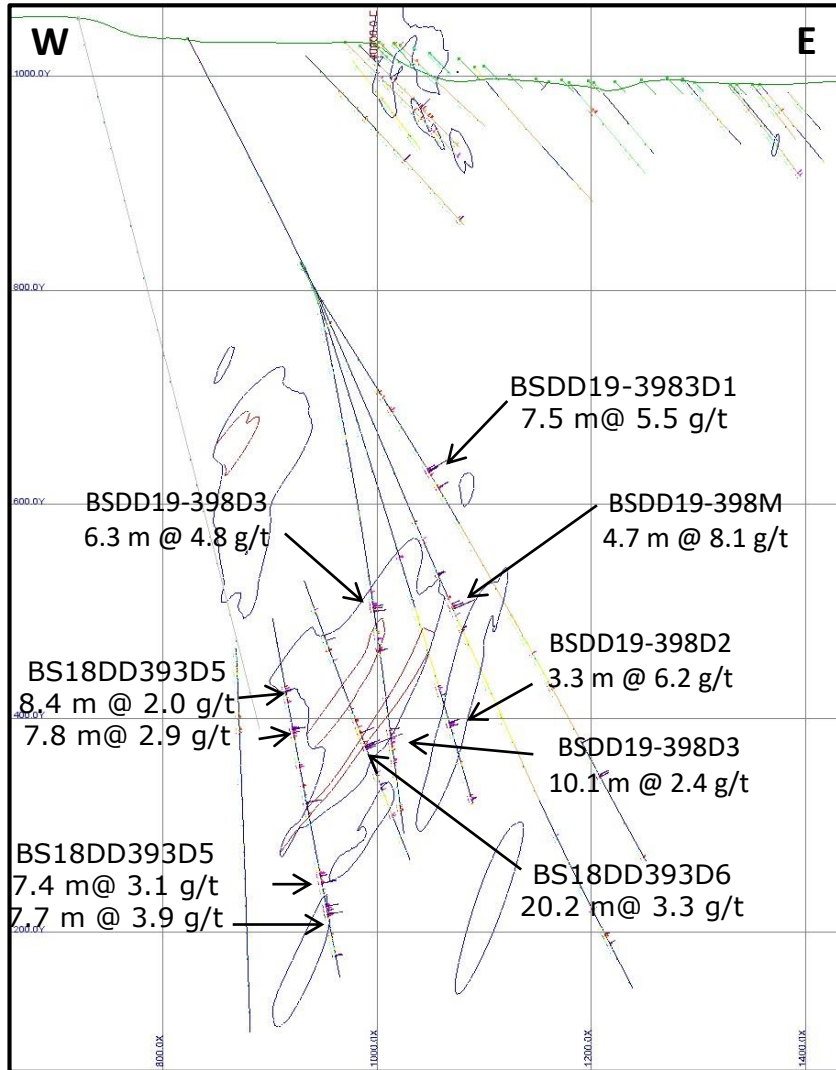
- Zones in HW has resulted in additional stopes
- BSDD19003 and BSDD19004 closes off mineralization up and down dip, but NOT included in 2018 YE resource estimate
- Inferred to Indicated drilling on 50 m spacing has added to Reserves
- Additional drilling was required to close off the resources up and down dip but has added ounces to reserve

B SHOOT SOUTH DRILLING: 19400 N INFERRED TO INDICATED CONVERSION DRILLING



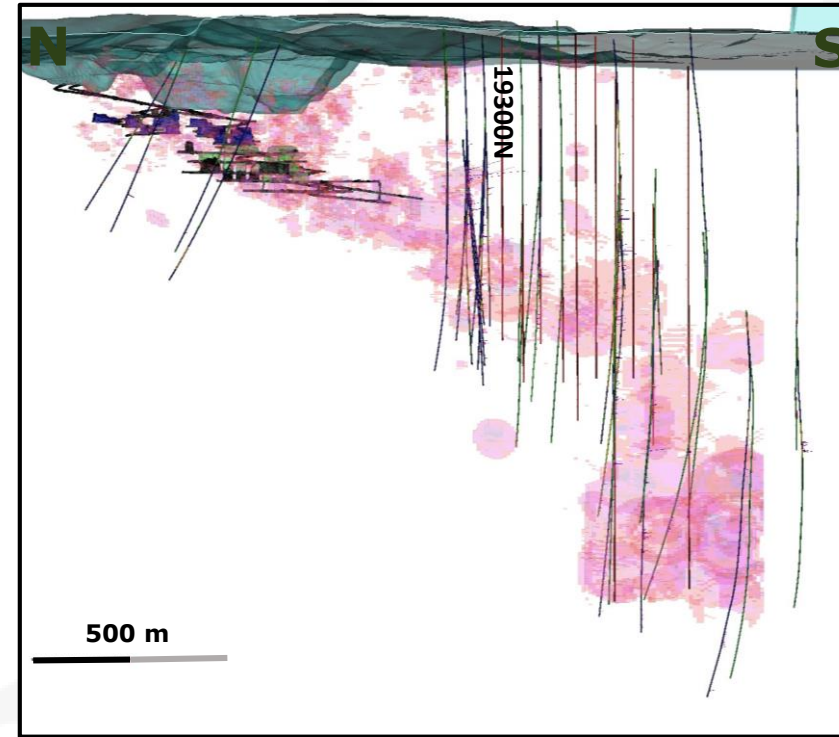
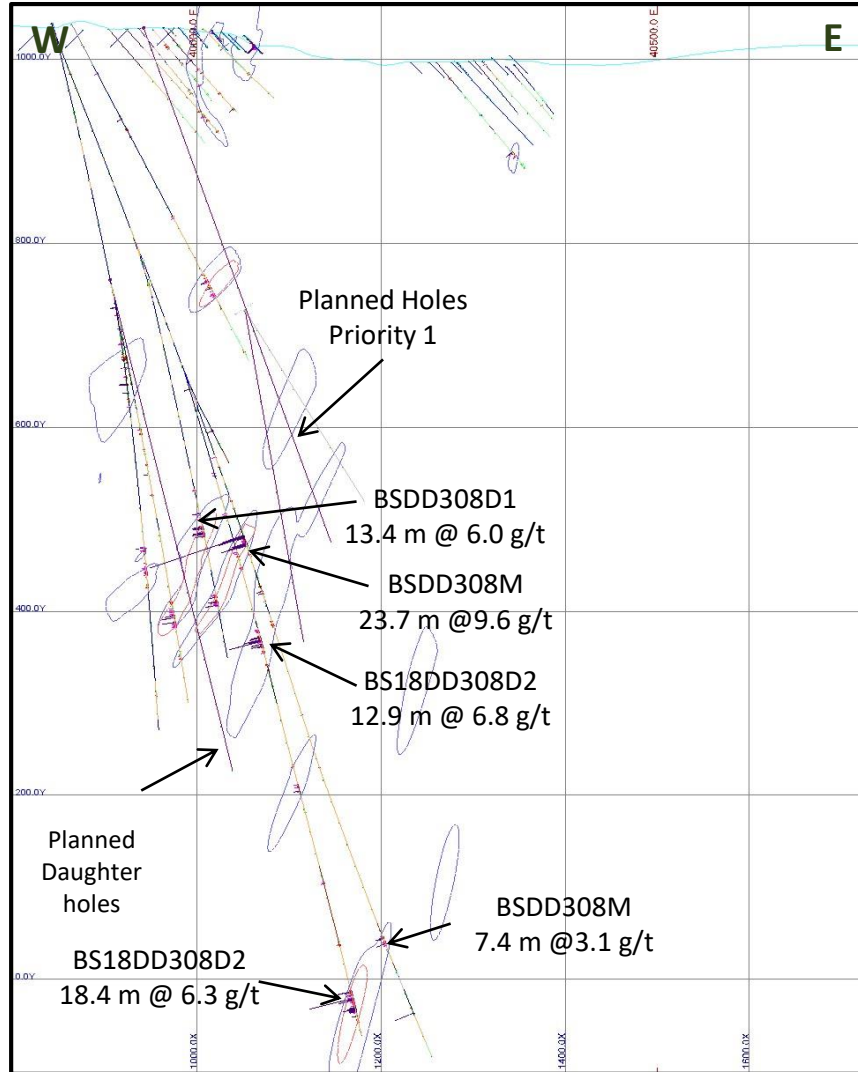
- BSDD19-396M, D1, D2 not in 2018 YE resource estimate, results will increase resources
- HW zone remains open and needs further drilling to close off, currently not budgeted
- New FW zone intersected in BSDD19-396D2, requires follow up drilling
- Drilling will result in an increase of Indicated resource on this section

B SHOOT SOUTH DRILLING: 19350N – INFERRED TO INDICATED CONVERSION DRILLING



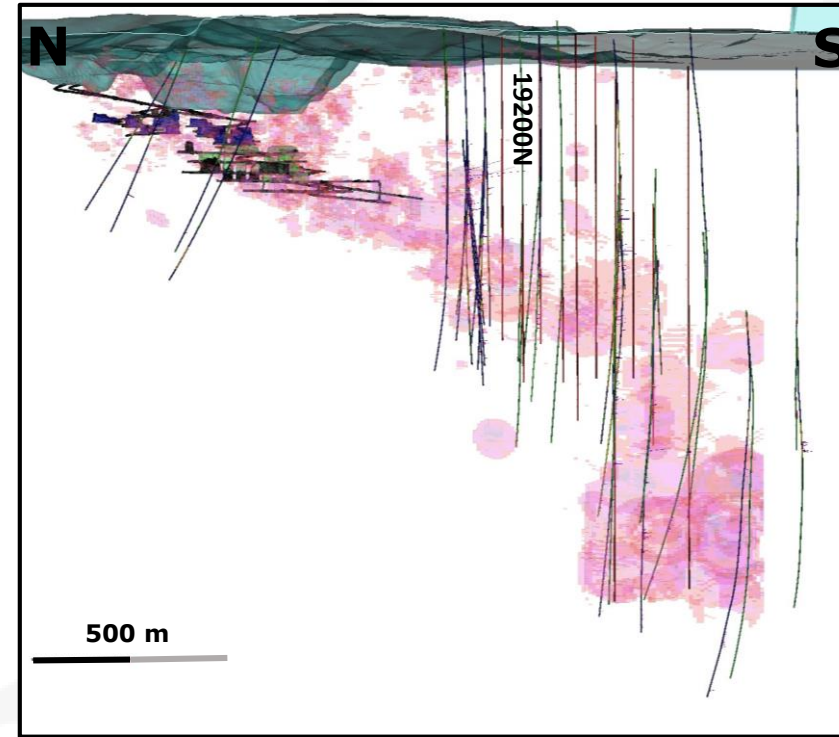
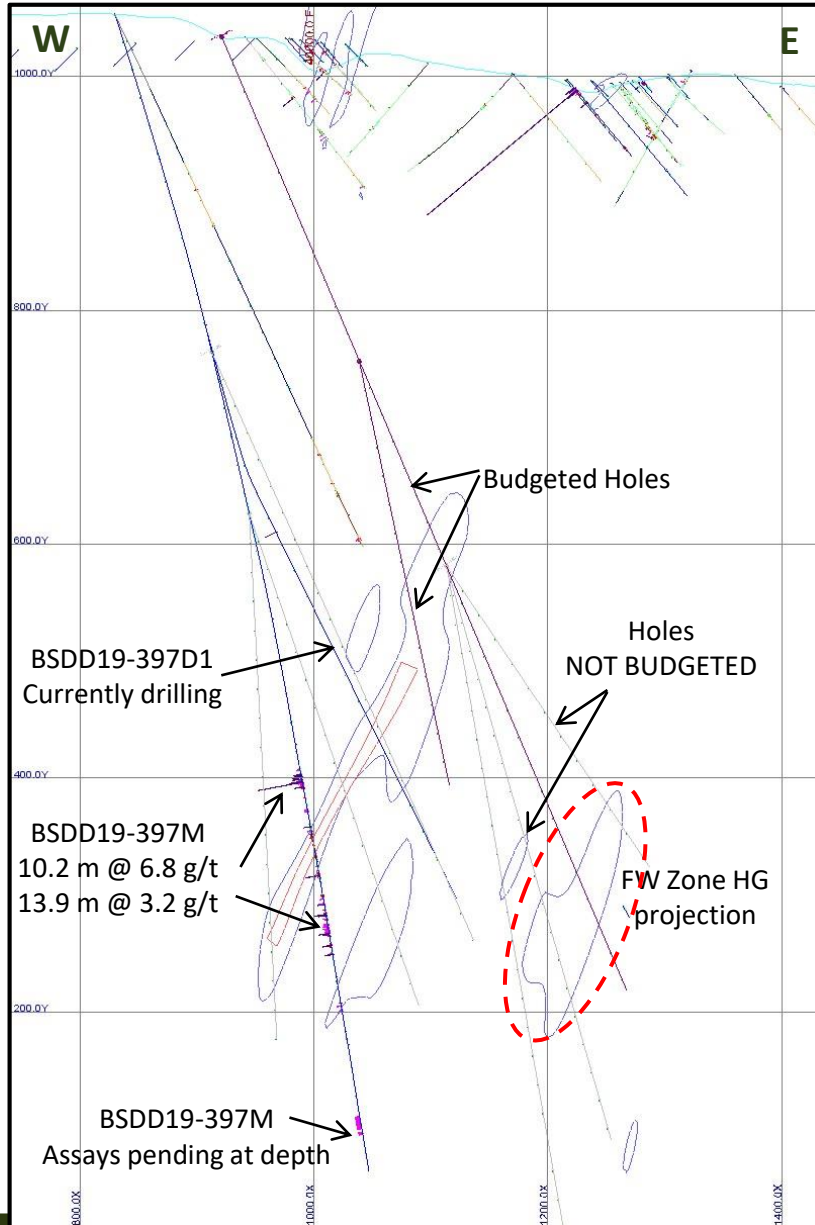
- All New holes not included in YE resource estimates
- Large portion to be converted from Inferred to Indicated
- HW and FW zones intercepted and will result in additional resources

B SHOOT SOUTH DRILLING: 19300 N



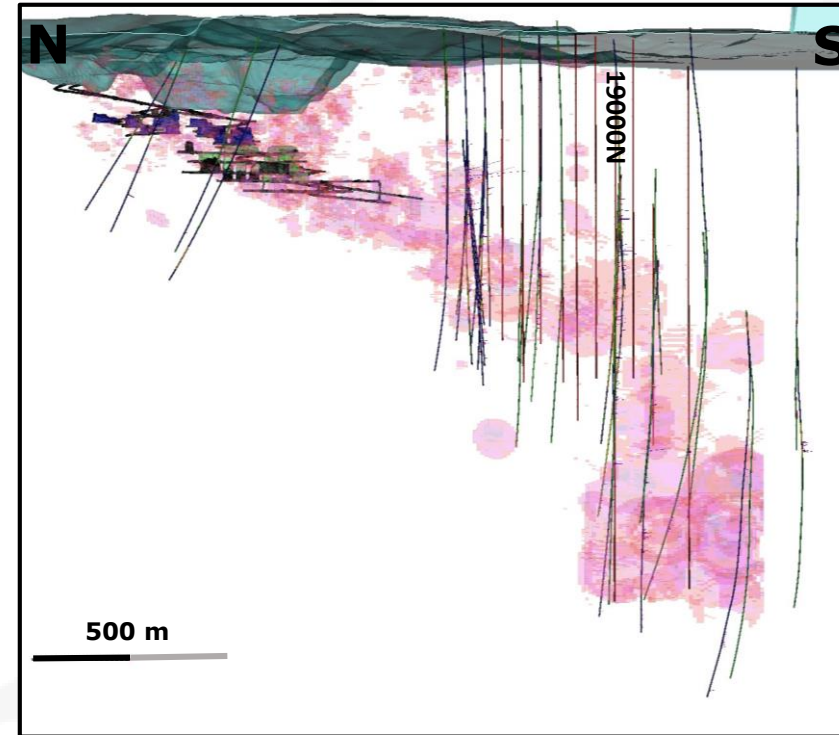
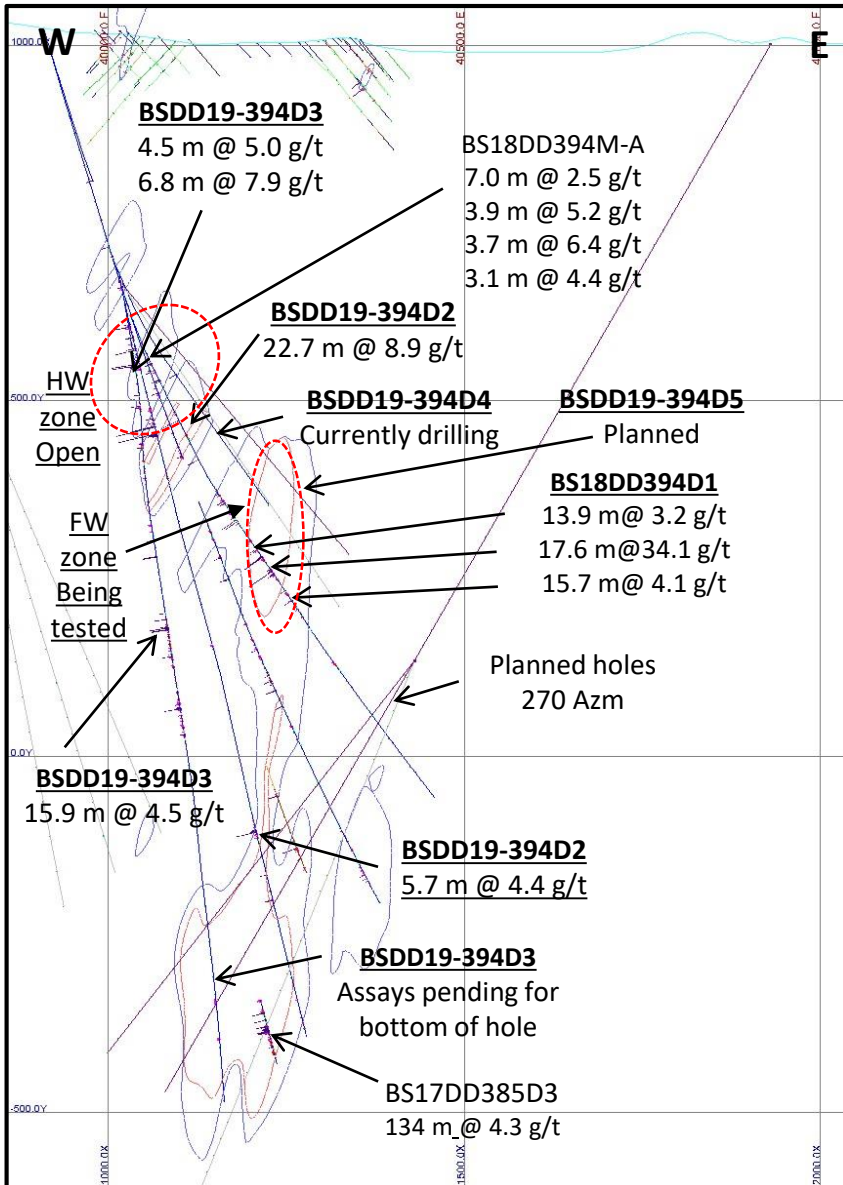
- Three additional holes planned to test previously drilled zones up and down dip as they remain open
- New drill results to be used in 2019 Year end Resource estimate updates

B SHOOT SOUTH DRILLING: 19200N INFERRED TO INDICATED CONVERSION DRILLING



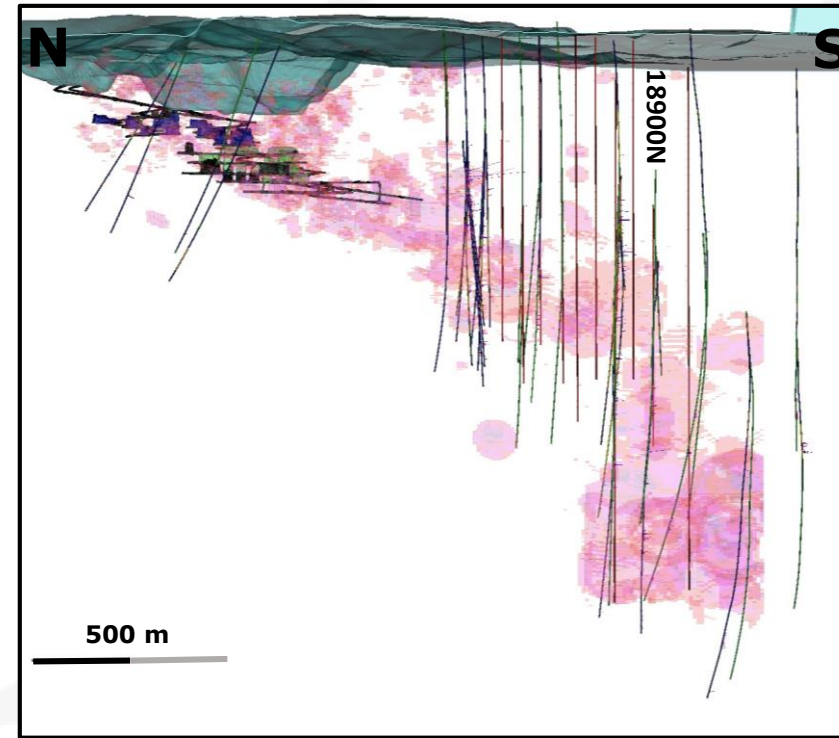
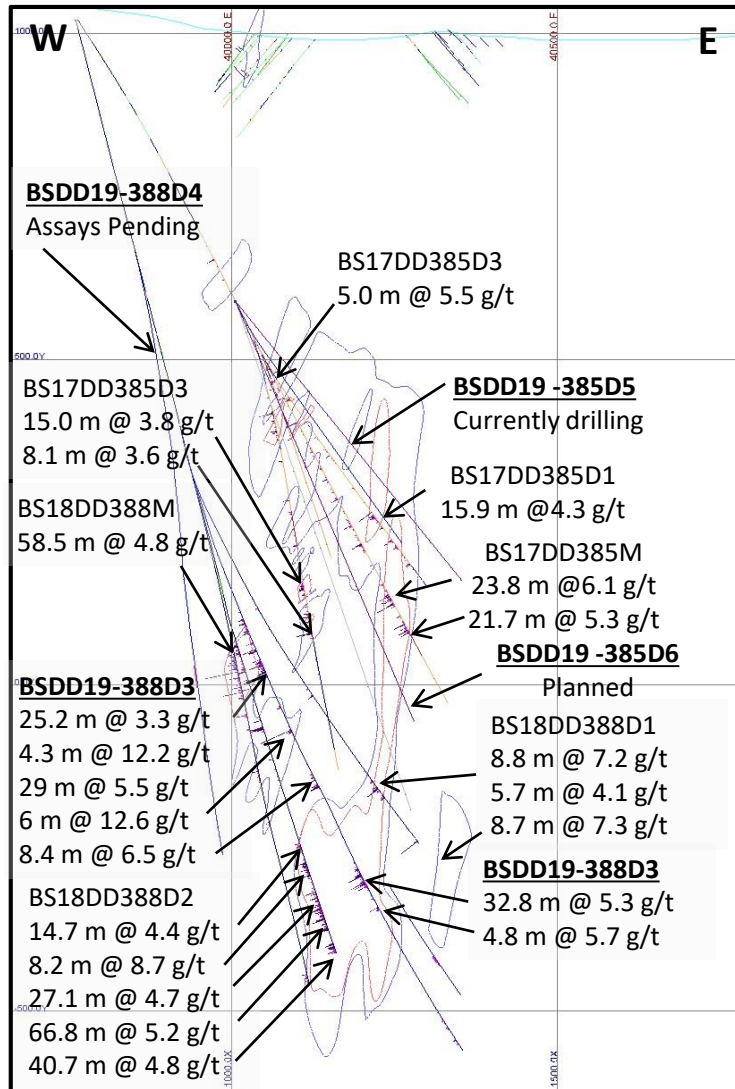
- Drilling to test B Shoot and FW HG zone projection
- Further drilling may be required pending positive results from additional drilling
- Results from BSDD19-397M has shown B Shoot zone is wider and higher grade than interpreted

B SHOOT SOUTH DRILLING: 19000N – INFERRED TO INDICATED CONVERSION DRILLING



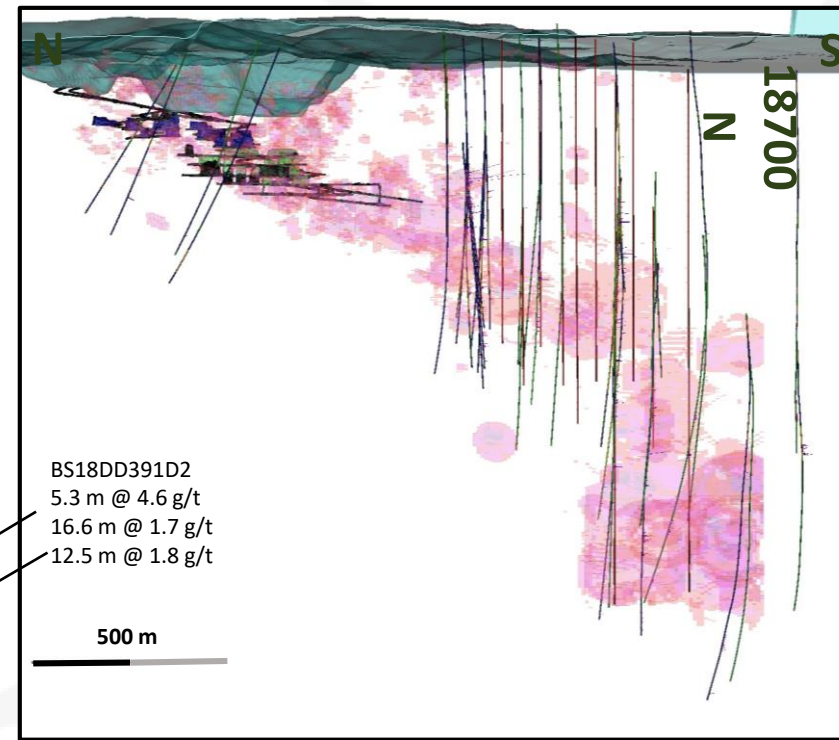
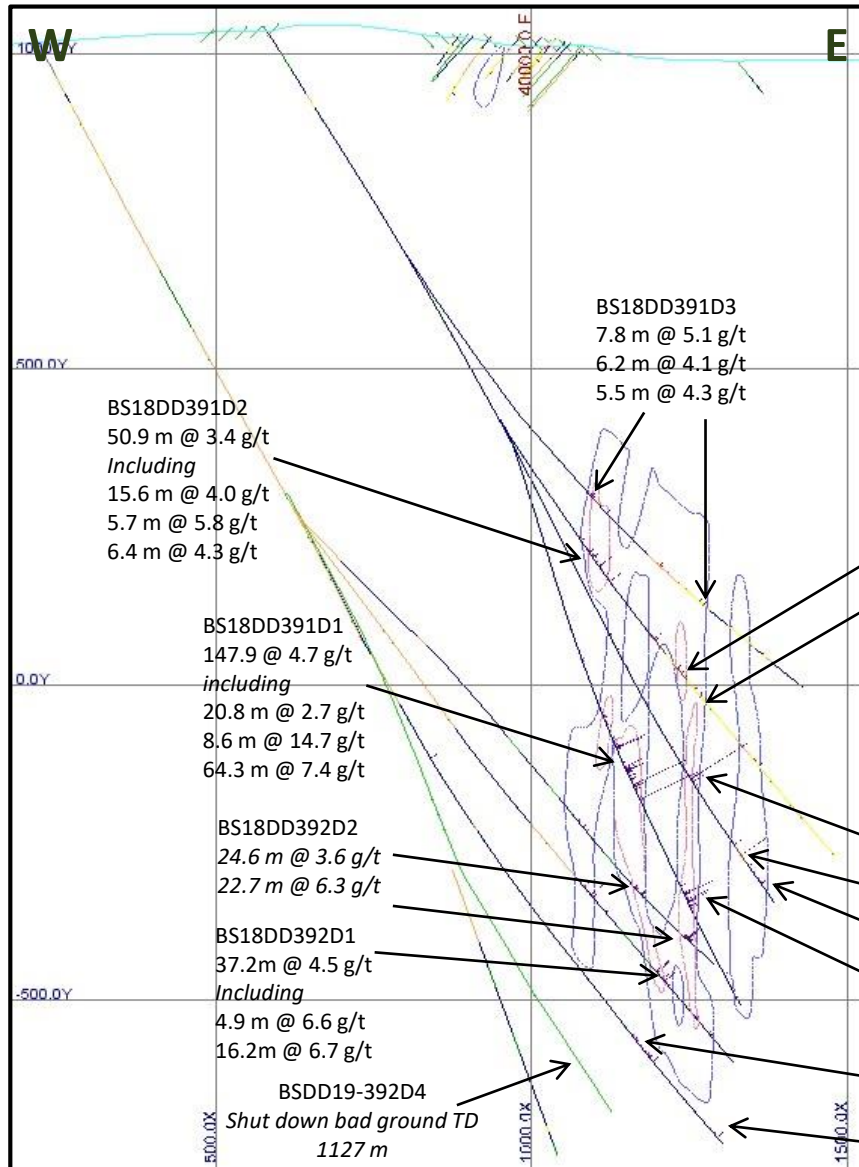
- All drilling on this section NOT included in last resource estimate – 2018 Year End
- BS18DD394D1 has intersected high grade in FW zone with two planned daughters testing this zone further
- HW zone is open down dip and requires further drilling
- *Note: BS18DD394D1 includes 0.3 m grading 1,548 g/t and when this is capped at 30 g/t the intercept grade averages 4.5 g/t*

B SHOOT SOUTH DRILLING: 18900N – INF DEFINITION/EXPANSION



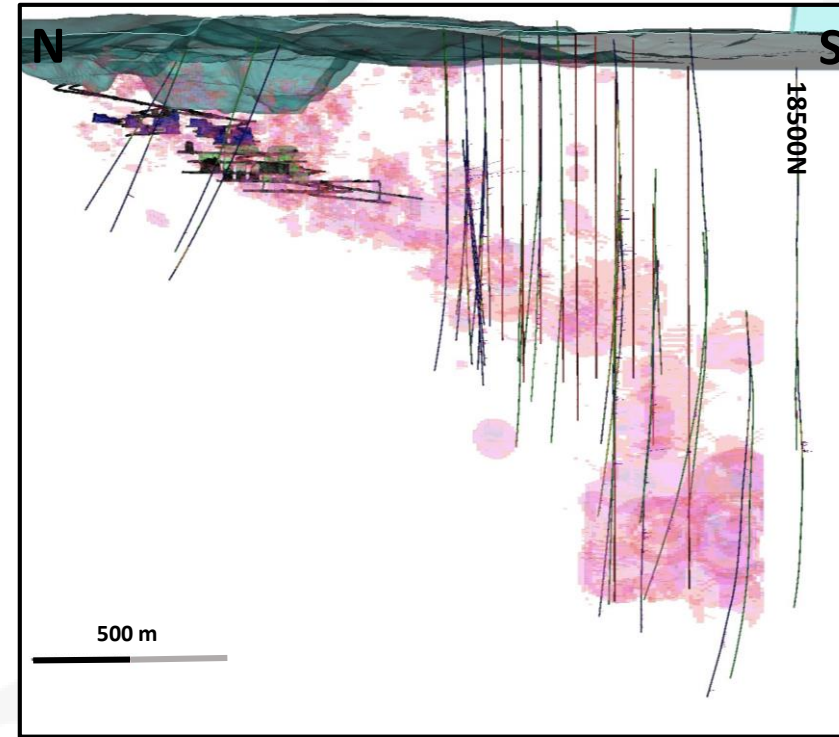
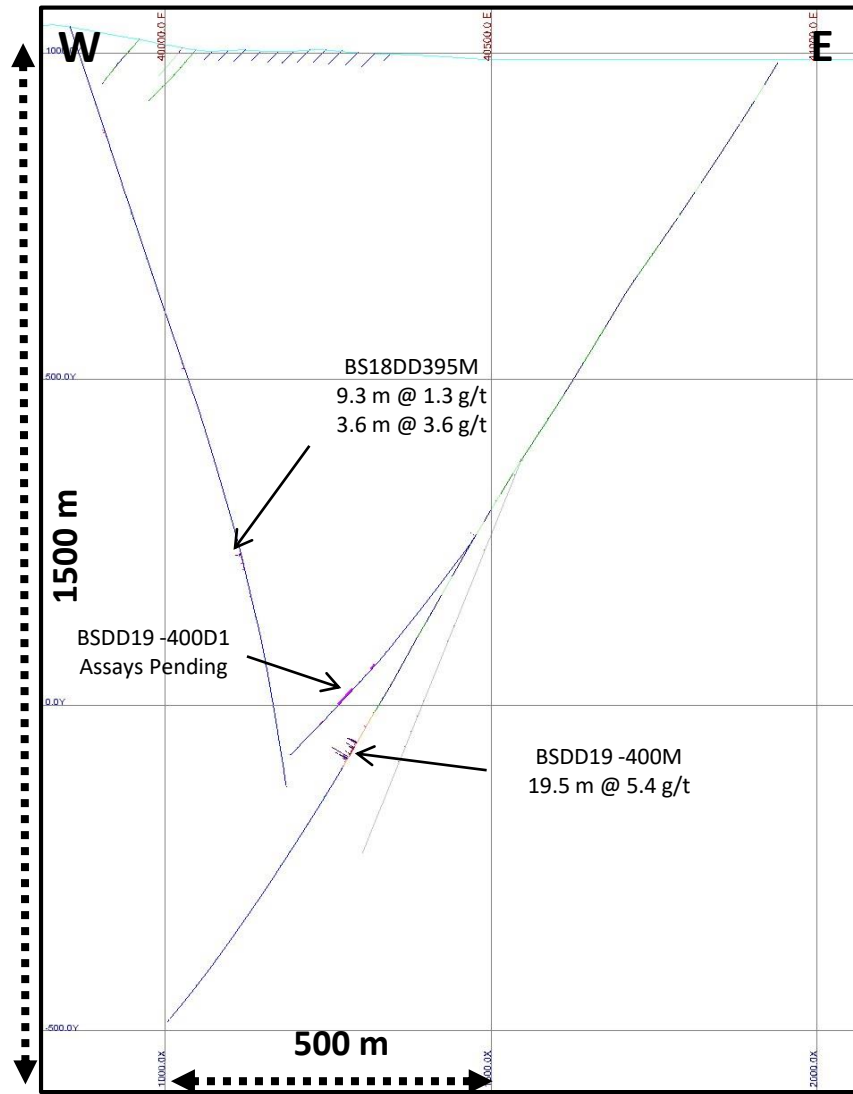
- Daughter holes 388D4 & 388D3 have confirmed the HW zone are larger than currently modeled which will add resources
- BSDD19-388D3 did not intersect a wide continuous zone of mineralization at depth and further drilling will be required to determine geometry of this zone
- Initial thoughts of the geometry at depth eludes to a tight isoclinal synform – antiform fold pair which doubles up the mineralized zone in some intersections

B SHOOT SOUTH DRILLING: 18700 N



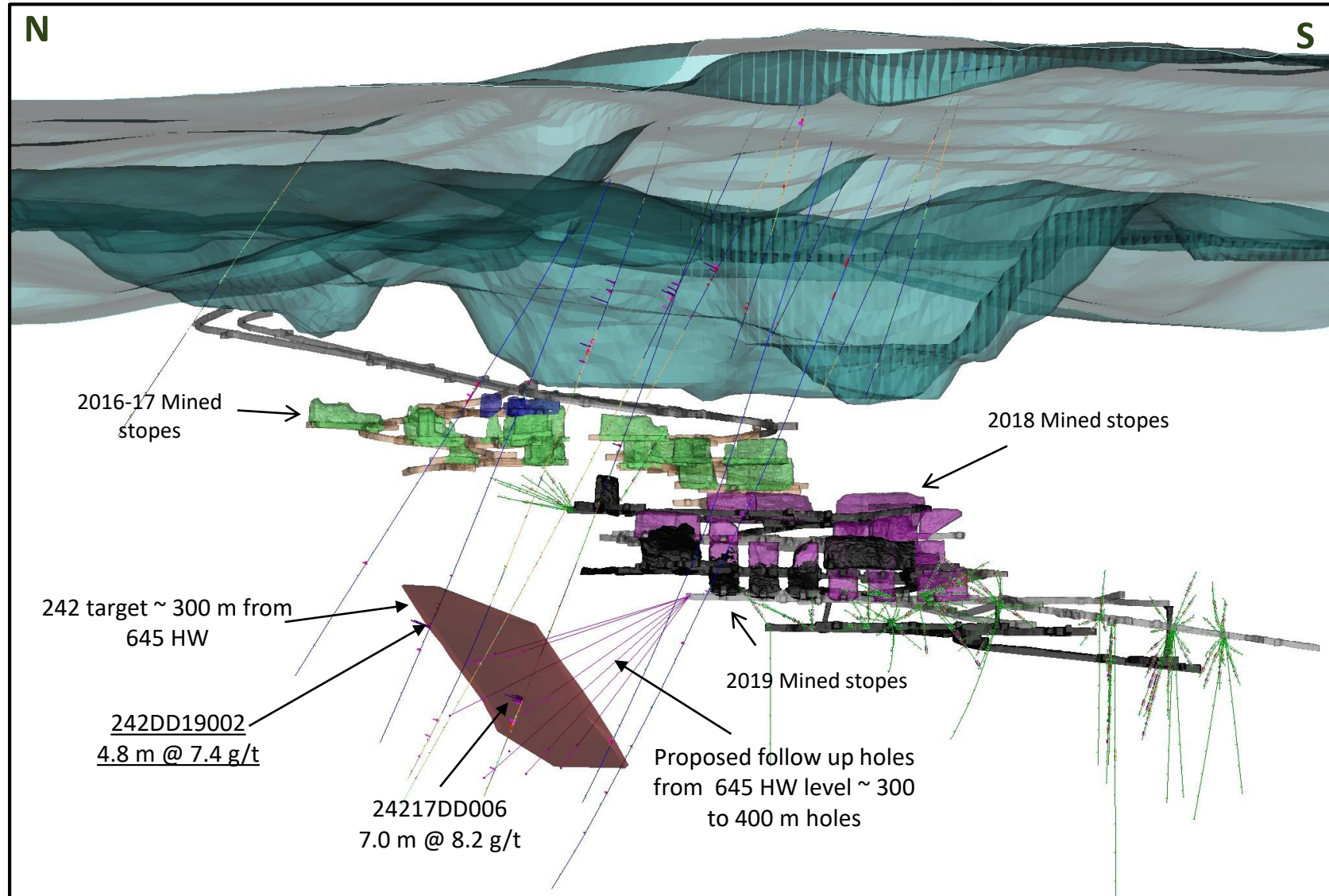
- Results from BS18DD392D3 will extend the current inferred resource at depth ~ 130 m down dip

B SHOOT SOUTH DRILLING: 18500 N 200M STEP OUT FENCE

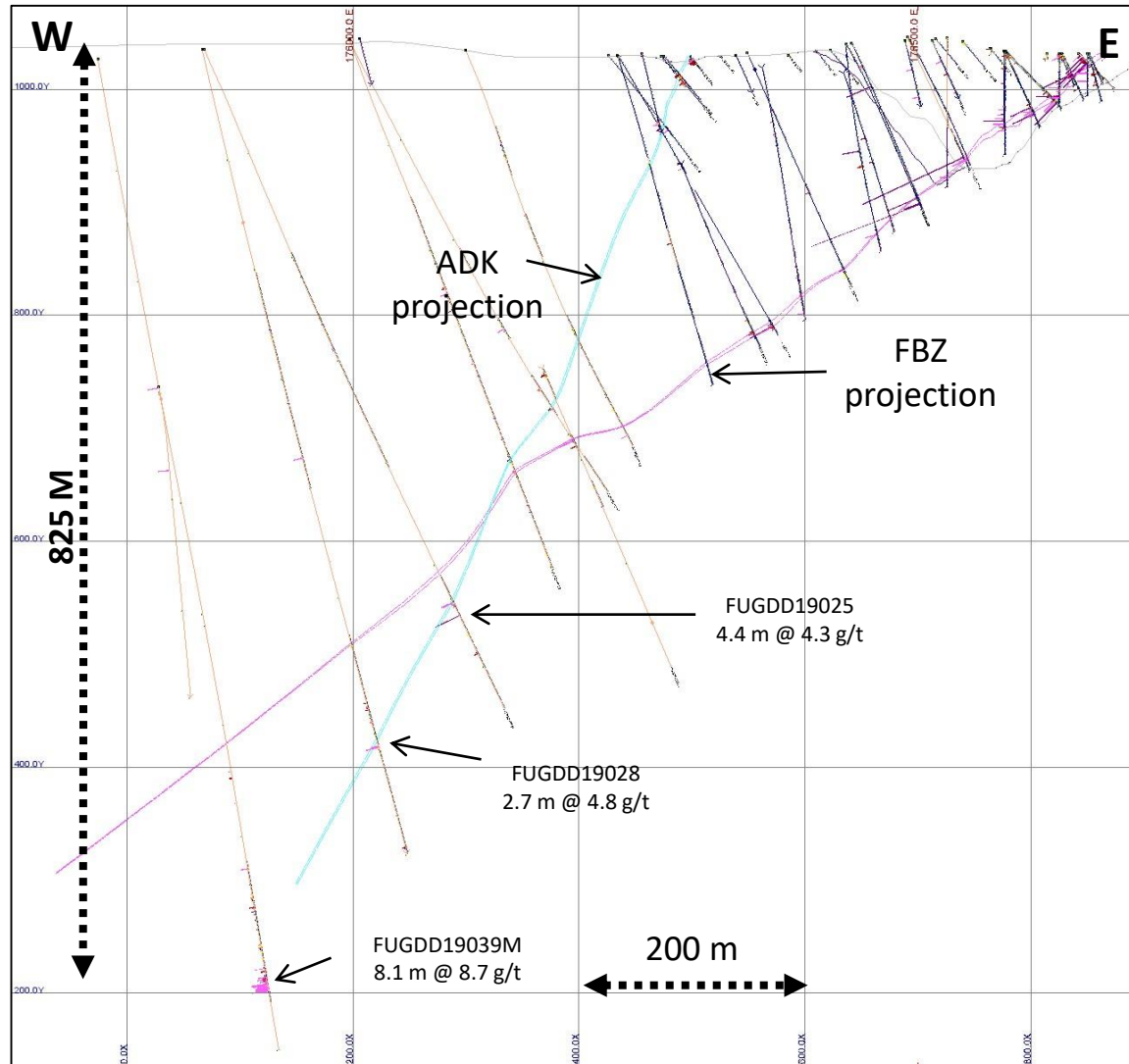


- Hole BSDD19-400m completed and has intersected a single zone of mineralization, extends known mineralization 200m south – Resource addition
- Mineralized zone constrained to Meta sedimentary package between Intermediate to Mafic porph in east and diorite in west
- Further drilling is justified

WASSA UNDERGROUND – 242 DRILLING UPDATE



FATHER BROWN DRILLING 33100N – DEEP STEP OUT HOLE



- FUGDD19039M drilled ~ 200 m down dip of last hole & targeting ADK HG zone down
- FUGDD19039D1 is currently being drilled and is targeting the ADK HG shoot a further 200 m down dip of this intersection and ~100 m to the south